

# SOUTH CENTRAL COMMUNITY FOUNDATION 2023 NEWSLETTER Q1



Page 1 .....	Strategic Plan Overview
Page 2 .....	Financials at a Glance
Page 2 ...	YMAD Seniors & Recruiting
Page 3-4 .....	Strategic Plan Excerpt

## NOTE FROM THE DIRECTOR...

Dear Friends,

Happy 2023! What an exciting year it has been so far.

Starting with scholarships, SCCF was thrilled to add five new opportunities for our local students, bringing our scholarship total to over 45.

With scholarship recipients selected in late April, the Foundation hopes to award over \$90,000 to the students from our seven counties.

Looking towards second quarter, SCCF will again be offering our annual grant cycle in June through August, with 3 applications available to all seven counties and 3 applications available to specific communities.

We hope you enjoy the other updates included and please let us know if you have any questions!

Sincerely,  
Holly Launchbaugh  
SCCF Executive Director

## 2023 - 2024 STRATEGIC PLAN

Dear South Central Kansas Communities,

Welcome to our newly created Strategic Plan for 2023 to 2024! Thanks to a very challenging past few years, the Board of Directors and staff were eager to create a plan that allowed flexibility but also equally focused on creating lasting change in our seven county service area.

As a regional Foundation, we recognize the many communities we serve and hope to help with their similarities while also appreciating their differences.

This plan was designed by our Board of Directors, staff, and input from many community members over the past year. We crafted this plan with measurable goals in mind and hope you enjoy reading through our intention!

Thank you for your continued support of SCCF and please let us know if you have any questions or input for the Foundation's goals.

Sincerely,  
Seth Filbert, *Board Chair*  
Holly Launchbaugh, *Executive Director*

*(Strategic Plan continued on pages 3-4, complete plan can be found online at [sccfks.org](http://sccfks.org) under the About Us tab.)*

## KEY DATES & UPCOMING EVENTS:

**May 9th** - SCCF Annual Board Meeting

**June 1st** - 2022 SCCF Grant Reports Due and the 2023 Grants Cycle Opens

**August 31st** - SCCF Grant Application Deadline

## SCCF AT-A-GLANCE:

**Assets:** \$24.1 million

**Current Funds:** 190

**Scholarships:** 45

### 2023 Grants

(As of 1st Quarter):

*Includes grants from donor's funds.*

**\$320,500**

## SCCF GRANTED OVER \$155,000 IN MARCH FROM DONOR FUNDS:

SCCF was excited award over 50 nonprofits from our Donor -Designated Funds . These grantees were selected by donors and receive a percentage of the funds each year.

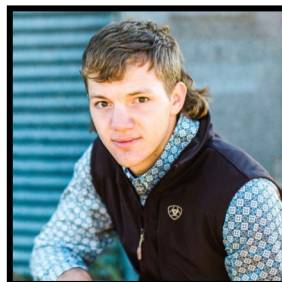
Many of these funds were created through estate gifts by families that have spent their entire life in our communities. They wanted their annual giving to go on forever; creating an endowment fund at SCCF was their solution.

It is an honor to partner with these families and be a small part of this impact. Visit [sccfks.org](http://sccfks.org) for a complete list of the nonprofits receiving grants in 2023.

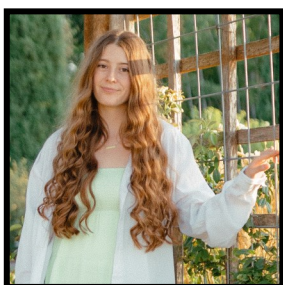
## CELEBRATING OUR 2023 SENIORS: YOUTH MAKING A DIFFERENCE COUNCIL



**EMMA ELLIOTT**  
**LYONS HIGH SCHOOL**  
**Fort Hays State University**  
**Secondary Education**  
*Goals: Plans to earn her master's in school counseling where she believes she could make the biggest impact in the world.*



**JOSHUA HILDEBRAND**  
**STAFFORD HIGH SCHOOL**  
**Kansas State University**  
**Mechanical Engineering**  
*Goals: After graduating college, Joshua plans to become a professional pilot.*



**KIERSTYN CUNNINGHAM**  
**MEDICINE LODGE HS**  
**Emporia State University**  
**Music Education**  
*Goals: Hopes to teach high school music.*



**SHELBY LINGAFELTER**  
**KIOWA COUNTY HIGH SCHOOL**  
**College of the Ozarks**  
**Engineering**  
*Goals: Plans to become an architectural engineer with a focus on interior design.*

## YOUTH MAKING A DIFFERENCE COUNCIL CURRENTLY RECRUITING!

South Central Community Foundation is currently recruiting for its Youth Making a Difference (YMAD) program. YMAD is a group of high school students who are responsible for selecting and granting out over \$20,000 a year. Students are able to learn more about philanthropy and give back to their community through reading the annual community grant applications and working together to select the projects they would like to fund. Anyone who attends a high school in SCCF's seven county service area is eligible to apply. For more information or to apply, visit our website at [sccfks.org](http://sccfks.org).

114 West 5th Street  
P.O. Box 8624  
Pratt, KS 67124

### SCCF STAFF:

*Holly Launchbaugh, Executive Director - [ed@sccfks.org](mailto:ed@sccfks.org)*  
*Hannah Brummer, Program Associate - [sccf@sccfks.org](mailto:sccf@sccfks.org)*

Office: (620) 672.7929  
Fax: (620) 672.7669  
[www.sccfks.org](http://www.sccfks.org)

## PURPOSES, MISSION STATEMENT, & VISION

### COMMUNITY FOUNDATION DEFINED:

*South Central Community Foundation recognizes the following definition for Community Foundations --*

A community foundation is a tax-exempt, nonprofit, autonomous, nonsectarian philanthropic institution supported by the public with the long-term goals of:

- Building permanent, component funds established by many separate donors to carry out their charitable interests
- Supporting the broad-based charitable interests and benefitting the residents of a defined geographic area, typically no larger than a state
- Serving in leadership roles on important community issues

### MISSION STATEMENT:

Our mission is to enhance the life, culture, and community of South Central Kansas by connecting people who care with causes that matter.

*Tagline: Connecting people who care with causes that matter.*

### VISION:

Our vision is to create a thriving rural region of supported communities.

### SUMMARY:

In the upcoming months SCCF will focus its time, energy, and resources on the four key goals:

**1. STRENGTHENING & EXPANDING IDENTITY:**

Strengthen and expand the identity of South Central Community Foundation, Community, Education, and Outreach.

**2. INCLUSIVE GROWTH:**

Raise more unrestricted dollars allowing SCCF to expand its reach.

**3. GRANT MAKING:**

Continue the evolution of SCCF's competitive grant cycle.

**4. CONNECTION:**

Continue connecting with current and potential donors to support their philanthropic goals.

## SCCF BOARD S.W.O.T. ANALYSIS:

STRENGTHS:	WEAKNESSES:
<ul style="list-style-type: none"><li>▪ Growth of portfolio</li><li>▪ Position as a “regional” Foundation</li><li>▪ Longevity</li><li>▪ Scholarships</li><li>▪ Focus on Youth</li><li>▪ Online giving</li></ul>	<ul style="list-style-type: none"><li>▪ Awareness</li><li>▪ “Branding”</li><li>▪ Potential grant increases</li><li>▪ Greater exposure to young people</li><li>▪ Greater donor connection/cultivation</li></ul>
OPPORTUNITIES:	THREATS:
<ul style="list-style-type: none"><li>▪ Building on current reputation</li><li>▪ Past success</li><li>▪ Dedication of board and staff</li><li>▪ Connect with attorneys, CPA, etc.</li><li>▪ Strong donor history and success stories</li></ul>	<ul style="list-style-type: none"><li>▪ Economy</li><li>▪ Tax Structure</li><li>▪ Thought of giving directly to charity</li><li>▪ Turnover/succession</li><li>▪ Uncertainty of focus of all counties</li></ul>

### The Board was asked what they would like to see happen in the next 2 to 5 years?

- Continued accreditation with Council on Foundations National Standards
- Greater awareness of where and how funding has improved education
- More education of donors as well as increased ways to facilitate their wishes
- Stronger awareness of who and what SCCF is in all communities
- Stronger connection to each community