



SOUTH CENTRAL COMMUNITY FOUNDATION

2022 2nd Quarter

NOTE FROM THE DIRECTOR:

June 30, 2022

Dear Friends,

We are so thrilled to share our 2022 SCCF Scholarship recipients on pages 2 and 3.

Reaching 53 students with over 30 different scholarship opportunities, we cannot thank our donors enough for the continued support of South Central Kansas students and their higher education dreams.

Moving into our next season, we cannot believe it is already time for grants. Learn more about the many opportunities for funding in the article to the right.

The last featured story we can't wait to share is about our Summer 2022 Listening Tours. This has been a great adventure for staff so far and we are excited to share our final report, coming this fall!

All the best,
Holly Rooks
SCCF Executive Director

2022 SCCF GRANTS NOW OPEN - NEW OPPORTUNITIES NOW AVAILABLE

South Central Community Foundation is excited to announce that all three grant opportunities from last year will be returning for the 2022 Grant Cycle including the Community Grant, Children's \$5,000 Health Grant, and Teacher's \$250 Grant. These three applications are offered to all seven counties in our service area including Barber, Comanche, Kingman, Kiowa, Pratt, Rice and Stafford.

SCCF will also be offering the 2nd annual Pratt County Achievement Place – Youth Development Grant to Pratt County. This opportunity again centers on the at risk youth of Pratt County and projects or programs impacting their lives.

New to 2022 is a grant opportunity focusing on building the communities future and impacting their needs. This is called the Greensburg Future Grant and will be specifically for Greensburg, Kansas nonprofits, schools, and churches to use towards the above goals.

Our second new opportunity is for Pratt County, called the Marjorie Gillig Grant. This grant is focused on Music/Arts, Primary Education, Senior Activities, Community Organizations, Church Programs, or Mission Trips.

To apply, visit our website (sccfks.org) which will redirect you to our grant portal. We strive to make this a simple process and welcome any questions to help make it easier for applicants.

Applications are now available and due August 31st, 2022.

Contact SCCF with questions at (620) 672.7929 or sccf@sccfks.org.

KEY DATES & UPCOMING EVENTS:

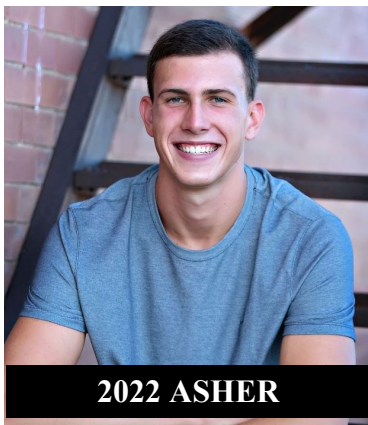
August 31st - 2022 Grant Applications Due

October & November - 2022 Grant Award Ceremony by County

January 1st - 2023 Scholarship Cycle Opens

2022 SCCF SCHOLARSHIP RECIPIENTS

LUCILE TURNER ASHER SCHOLARSHIP IN MATHEMATICS -- \$8,000*	Elijah Delp & Ty Fulbright
AGNES AXLINE MEMORIAL ENDOWED SCHOLARSHIP -- \$1,600	Eve Phipps
OTT AND EVELYN BEAGLEY SCHOLARSHIP -- \$250	Grady Clouse & Taylor Lampe
JASON BEFORT MEMORIAL SCHOLARSHIP -- \$1,000	Gillian Swindler
MARY BROWN MEMORIAL SCHOLARSHIP -- \$500	Alexandra Schreiner
W.L. "BILL" BROWN MEMORIAL SCHOLARSHIP -- \$500	Geoffrey Holloway
JOHN F. AND SUSAN M. CROMER ENDOWED SCHOLARSHIP -- \$2,000	Ryan Adams & Sydney Koirth
SHIRLEY CUNNINGHAM MEMORIAL SCHOLARSHIP -- \$500	Eve Phipps
KELLY DUNCAN MEMORIAL SCHOLARSHIP -- \$500	Lexie Brummer
KIOWA COUNTY HIGH SCHOOL HAVILAND KANSAS ELLIS SCHOLARSHIP -- \$1,500	Alyssa Monroe
FARRAR ENTREPRENEUR SCHOLARSHIP -- \$500	Grady Clouse & Hadley Woods
LARRY GIEFER MEMORIAL COMMUNITY SERVICE SCHOLARSHIP -- \$500	Emma Wrench
GLEN AND LENA HANSON SCHOLARSHIP -- \$500	Caity Cline
HARDY FAMILY SCHOLARSHIP -- \$1,000	Tina Banman
BERNICE HERD COLLEGE SCHOLARSHIP -- \$600	Gentry Girk & Sierra Jellison
WILLIS AND VADA HOSKINSON SCHOLARSHIP -- Varied Amounts	Erin Jackson, Eva Schwertfeger, & Madison Dowsey
BILL KRUG SCHOLARSHIP -- \$1,000	Caity Cline, Grady Clouse, & Rylee Jacobson
VICKIE LACKEY SCHOLARSHIP -- \$1,000	Rylee Jacobson
LORI LAMB LEGACY GRANT -- \$8,000*	Joaquin Mendez
DENNIS J. LARKIN SCHOLARSHIP -- \$500	Eve Phipps
GLORIA AND BILL LEWIS FAMILY SCHOLARSHIP -- \$4,000*	Preston Dunn





2022 LARKIN



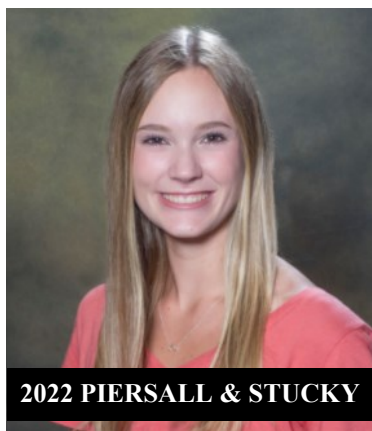
2022 ODEN



2022 ODEN

JACOB D. ODEN CHARACTER – CITIZENSHIP SCHOLARSHIP	-- \$450	Wyatt Beltz & Cody Oden
LAURA BETZEN-OEDING MEMORIAL SCHOLARSHIP	-- \$900.....	Levi Adelhardt
LELAND “DOC” PIERSALL SCHOLARSHIP	-- \$2,500	Clare Pollock
GLORIA PIERSALL SCHOLARSHIP	-- \$1,500	Avery Grieve
PLATT RANCH SCHOLARSHIP	-- \$600	Caity Cline & Hadley Woods
JEAN E. PULLIAM AND ROBERT L. PULLIAM SCHOLARSHIP	-- \$1,500	Delaney Arensdorf & Coye Stucky
TONY RENOLLET SCHOLARSHIP	-- \$2,500	Ty Fulbright
KAREN MYNSSEN-SANTOS MEMORIAL NURSING SCHOLARSHIP	-- \$500	Sydney Koirth
NICHOLAS M. SCHEER MEMORIAL SCHOLARSHIP	-- \$500	Geoffrey Holloway
CYNTHIA COEN STEPHEN MEMORIAL SCHOLARSHIP	-- \$500.....	Hunter Smith
DR. DEAN AND JEAN STUCKY MEDICAL AND NURSING SCHOLARSHIP	-- \$600.....	Chloe Blunk & Clare Pollock
CHARLIE & NILA SWAYZE SCHOLARSHIP	-- \$1,000.....	Caity Cline & Taylor Lampe
STEVEN TETRICK MEMORIAL SCHOLARSHIP	-- \$500	Alexandra Schreiner, Colby Schreiner, Coye Stucky, & Anthony Weninger
GEORGE R. WATSON SCHOLARSHIP	-- Varied Amounts.....	Alexandra Schreiner, Colby Schreiner, & Emma Wrench

**Scholarship is available for up to eight semesters, contingent on specific renewal criteria.*



2022 PIERSALL & STUCKY



2022 SWAYZE



2022 SWAYZE

SCCF AT-A-GLANCE:

Assets: \$22.6 million

Current Funds: 184

Scholarships: 40

2022 Grants (As of 2nd Quarter):
Includes grants from donor's funds.

\$562,000

2022 - 2023 BOARD OF DIRECTORS:

CHAIR

Seth Filbert, Macksville

VICE CHAIR

Brenda Fry, Coldwater

TREASURER

Luke Kumberg, Pratt

SECRETARY

Judy Schrock, Hazelton

PAST CHAIR & MEMBER-AT-LARGE

Lance Dixon, Kingman

Stephanie Salisbury, Coldwater

Hannah Brass, Medicine Lodge

Mike Romme, Kingman

Brad Lingafelter, Haviland

Chad Pore, Greensburg

Jennifer Slater, Pratt

Derrick Ploutz, Sterling

Recruiting, Rice County

Hannah Sallee, St. John

2022 SUMMER LISTENING TOURS: UPDATE

South Central Community Foundation Board of Directors and Staff have been anxiously awaiting to host the Summer 2022 Listening Tours and it's finally happening!

These tours are intended to gather information from each of the seven counties we serve with a hope of better understanding each individual community and the needs they currently have.

Asking questions about their county's achievements and shortfalls, the Foundation intends to use this information to better assess how we interact with the communities, our grant-making process, and the overall impact SCCF could have in South Central Kansas.

To date, we have completed seven of the nine tours and look forward to compiling all the data to share with our supporters.



KINGMAN COUNTY COURTHOUSE



RICE COUNTY COURTHOUSE

If you cannot attend the tours in person, we have created an online survey to help voice your opinion. Find the link on our Facebook page or the Foundation's website at sccfks.org.

For questions about the County Listening Tours or the Foundation in general, contact us at:
(620)672.7929 or ed@sccfks.org.